

2024 **TOYOTA**

# HILUX

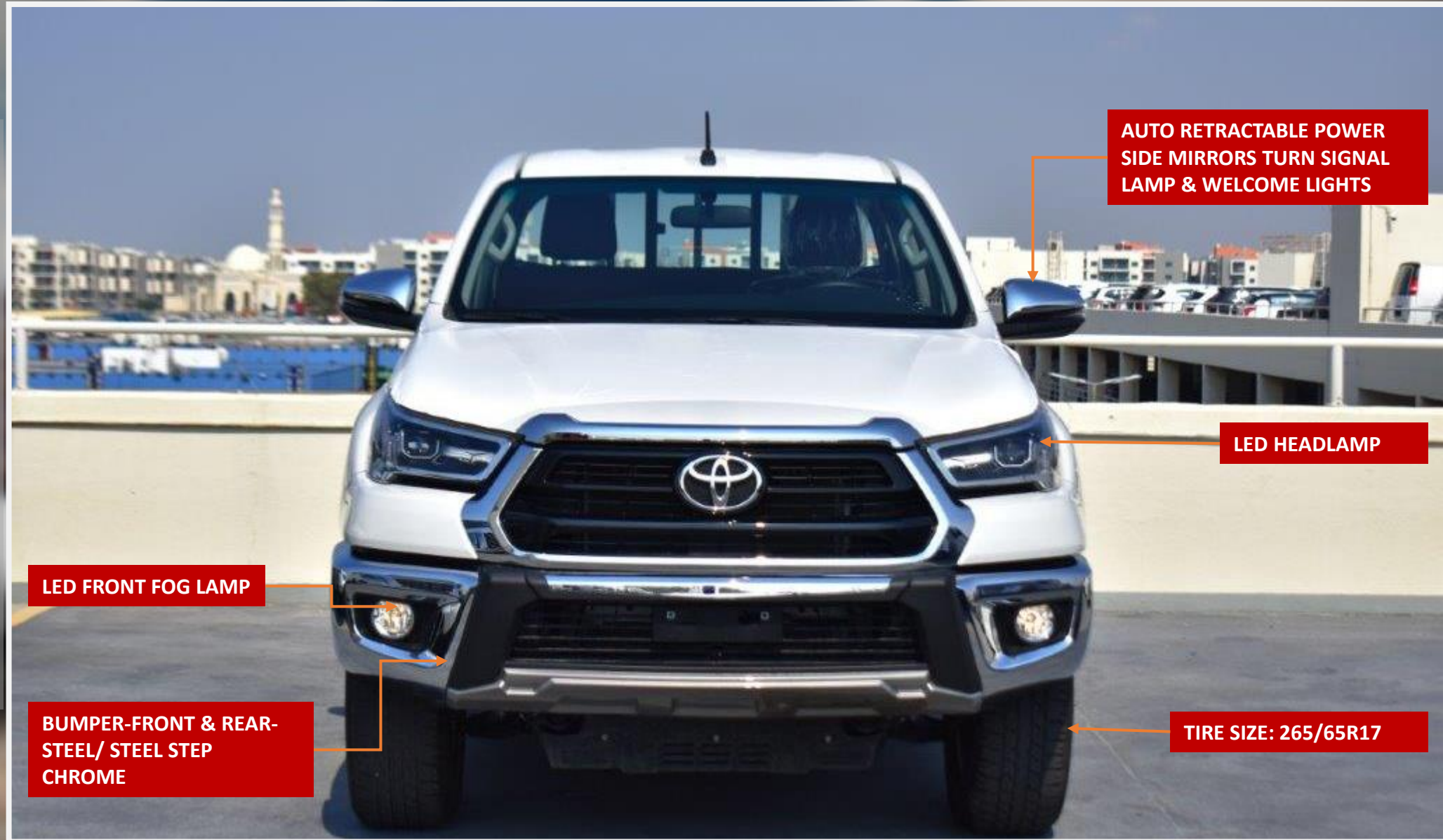
DC PICKUP 2.7L PETROL AT



# 2024 TOYOTA HILUX DOUBLE CABIN PICKUP GLXS-V 2.7L PETROL AUTOMATIC

## TECHNICAL FEATURES:

ENGINE TYPE- 2 TR FE, 4 CYL, 16V,  
DOHC, DUAL VVTI (EURO4 W/O  
OBD)  
ENGINE & DISPLACEMENT CC - 2694  
DRIVETRAIN HP SAE (NET)- 164  
TORQUE KGM SAE (NET) - 25  
FUEL SYSTEM - EFI  
FUEL TYPE- GASOLINE  
FUEL TANK CAPACITY LTRS- 80  
CATALYTIC CONVERTER WITH  
TRANSMISSION-6-SPEED  
AUTOMATIC  
4WD OPTIONS PART-TIME  
TIRE SIZE-265 / 65 R17 ALL TERRAIN  
ALLOY/ ALLOY --> STEEL SPARE TIRE  
TELESCOPIC STEERING MANUAL  
ELECTRICAL LOCK



LED FRONT FOG LAMP

BUMPER-FRONT & REAR-  
STEEL/ STEEL STEP  
CHROME

AUTO RETRACTABLE POWER  
SIDE MIRRORS TURN SIGNAL  
LAMP & WELCOME LIGHTS

LED HEADLAMP

TIRE SIZE: 265/65R17



### EXTERIOR FEATURES

BUMPER-FRONT & REAR-STEEL/ STEEL STEP CHROME

DOOR HANDLES -CHROME PLATED

MUD GUARDS FRONT & REAR-FRONT + REAR

OUTER MIRROR COLOUR

KEYED CHROME PLATED WITH TUN SIGNAL+POWER

SIDE STEP

SIDE STRIPE -NEW DESIGN

WINDSHIELD GLASS-GREEN LAMINATED W/TOP SHADE

### SAFETY FEATURES

BRAKE FRONT / REAR - V.DISC / DRUM  
SUSPENSION-FRONT DOUBLE WISHBON & REAR LEAF SPRING

ABS + EBD + BA

AIR BAGS-D + P + KNEE (DRIVER)

VSC+HILLSTART ASSIST CONTROL (HAC)  
+ TRAILER SWAY CONTROL (TSC)

DOWNHILL ASSIST (DAC)



SIDE STRIPE -NEW DESIGN

DOOR HANDLES -CHROME PLATED

BUMPER-FRONT & REAR-STEEL/ STEEL STEP CHROME

SIDE STEP

TIRE SIZE-265 / 65 R17  
ALL TERRAIN

## ELECTRICAL FEATURES

TACHOMETER

AUTO AIR CONDITIONER WITH REAR AC VENTS

ANTENNA-SHORT POLE

SMART ENTRY + PUSH BUTTON START

AUDIO- 8" PREMIUM DISPLAY AUDIO W/ DVD,

USB, AUX, BT, 6 SPK

KEYLESS ENTRY

METER ILLUMINATION CONTROL

POWER DOOR LOCK

POWER WINDOW

RADIO- AM/FM

WIPER FRONT-ADJ. INTERMITTENT: MIST

LIGHT CONTROL SYSTEM-W/ FOLLOW ME HOME

ANTI-THEFT IMMOBILISER

BACK VIEW CAMERA

BEDLINER

COOL GLOVE BOX

CRUISE CONTROL

DOOR COURTESY LAMP-W/ REFLECTOR

ECO/POWER MODE

FLOOR MAT

FRONT FOG LAMP

HEADLAMP-LED W/ AUTO LEVELLING

DAY TIME RUNNING LIGHTS – LED

MULTI INFO DISPLAY

RADIATOR GRILLE-CHROME + METALIC BLACK

REAR FOG LAMP

REAR WINDOW-SLIDE TYPE

SAFETY KIT

SHIFT LEVER KNOB-LEATHER WITH WOOD

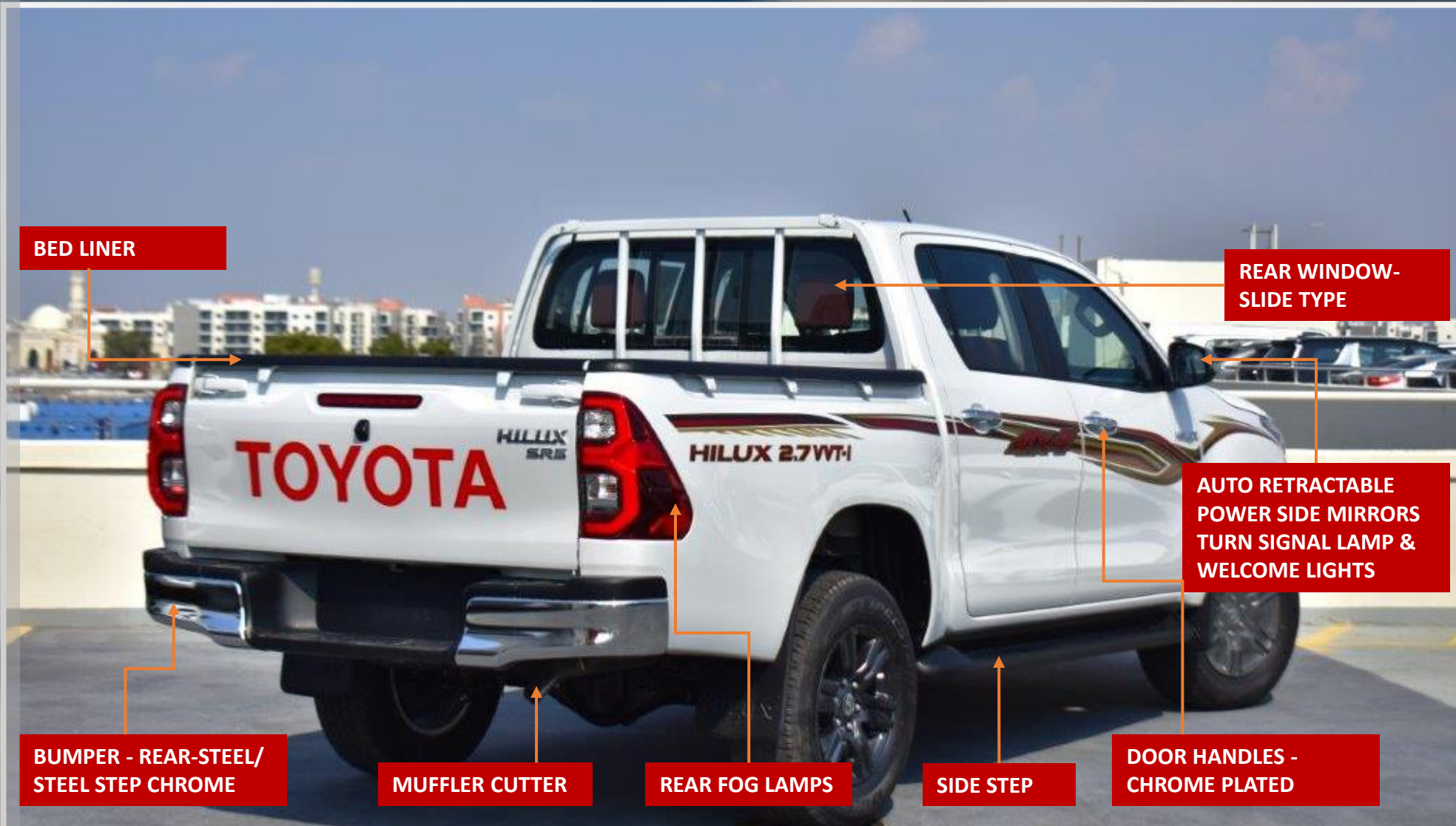
STEERING WHEEL- URETHANE W/ CONTROL

SWITCHES+ HIGH SILVER

DECK GUARD FRAME

TAILGATE LIFT ASSIST

TYRE PRESSURE MONITORING SYSTEM



## INTERIOR FEATURES

CONSOLE BOX-CONSOLE BOX W/SOFT LID

FR. SEAT-FR. SEAT BELT 3PELRX2 W/PT & FL

VERTICAL SEAT ADJUSTER - W/ DRIVER

REAR SEAT- REAR SEAT BELT-

3PELRX2+2PNRX1

HEAD REST- WITH (2 NO.)

CENTRE ARMREST- W/ CUP HOLDER

DIGITAL CLOCK

INNER REAR VIEW MIRROR-DAY/NIGHT

SEAT MATERIAL- SUPERIOR FABRIC

SEATING CAPACITY- 5

SUN VISOR- DRIVER (W/HOLDER) + P (W/MIRROR & LID)

## DIMENSIONS AND WEIGHT

DIMENSIONS LX WX H MM-5325 X 1855 X 1815

DECK DIMENSIONS LX WX H MM-1520 X 1575 X 480

WHEEL BASE MM-3085

GROUND CLEARANCE MM-310

KERB WEIGHT (KGS)-1925-1990

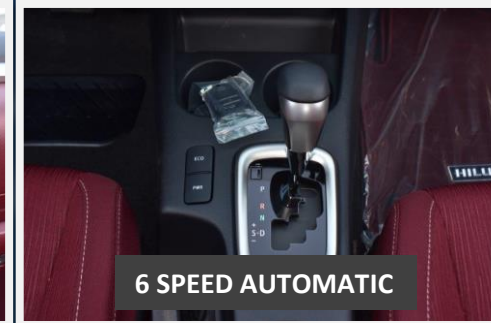
GROSS VEHICLE WEIGHT (KGS) 2800



STEERING WITH AUDIO CONTROLS



REAR VIEW CAMERA



6 SPEED AUTOMATIC



REAR AIR CONDITIONING VENTS



2024 **TOYOTA**

# HILUX

DC PICKUP 2.7L PETROL AT



[BOOK NOW](#)